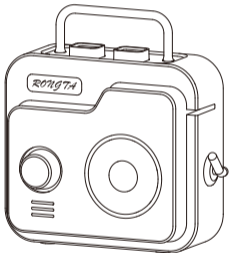


RONGTA 0.5 inch Label Printer

RONGTA R1 USER MANUAL



Mark the small beauty of life
keep every moment of small happiness

V1.0

Catalogue

Safety instruction	1
Device parameters.....	2
Packing list.....	3
Appearance of the component	4
Power light	5
USB interface.....	6
Labels installation	7
Charging instruction.....	10
APP download	11
Printer connection.....	12
Printer head cleaning.....	15
Troubleshooting	17
FCC WARNING	18

Safety Information

Before using the printer, read the following notice carefully to avoid personal injury or equipment damage.



Safety Notice

1) Take first aid measures if the printer gives out smoke, smell or noise for unknown reasons.

- Close the printer
- After the smoke disappeared, contact the dealer for repair.

2) Use only approved accessories and do not attempt to disassemble, repair or modify them by yourself.

- If you need any service, please contact dealer.

3) Don't pour water or other objects into the printer.

- If this happens please turn off the printer and contact the dealer

4) Do not use the printer when the operation fails, as this could cause a fire or electric shock.

5) Other considerations.

- The printer should be far away from the water and avoid direct sunlight, strong light and heat.

- Don't in the high temperature, large temperature and polluted areas use and keep the printer.

- Avoid the printer in the vibration and impact.

- If a long time not to use the printer, please shut down the printer power supply.

To ensure print quality and product life, it is recommended to use recommended or equivalent quality paper.

- Please do not use the printer near flammable materials such as gas stations, fuel warehouses, etc.

- When the printer is printing, please do not open the cover of the paper compartment, otherwise unexpected situations may occur or even damage the printer.

- There is a danger of explosion if you replace the battery with the wrong type, be sure dispose of the used battery according to the instructions

Product Specifications | Device Parameters

Model	RONGTA R1
Printing method	Direct thermal
Printing width	12mm
Support Consumables	Labels, Continuous paper
Print density	Light, Standard, Dark
Print resolution	203dpi
Print head life	50KM
Communication Interface	Bluetooth 4.2
Product size	110*112.8*50.5mm
Battery	1800mAh 3.7V
Power input	5V --- 1A
Power supply	Lithium battery
Supported operating systems	Android
	iOS

Packing List



Label Maker



Labels(Optional)

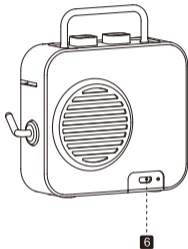
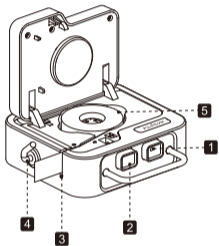


USB*1



Quick Start Guide

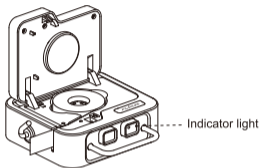
Machine description | Outward components



- 1** Power button
- 2** Opening key
- 3** Paper outlet

- 4** Paper cutting handle
- 5** Paper Storehouse
- 6** USB interface

Machine description | Power Indicator



Power button description

Button	Operate	Function
Power button	Press and hold for 5 seconds	ON/OFF
	Press and hold for 2 seconds	Paper Out (Label Positioning)
	Double click	Print selftest page

Indicator light description

Green light is always on	Fully charged, normal use
Red light flashing	No paper, the paper compartment cover is not closed
Red light is always on	Charging
Green light flashing	Low battery remind

Device instruction | USB interface

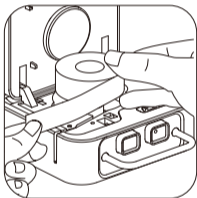
The USB socket of the printer is standard Type A



Pin	Definition
1	VBUS
2	D-
3	D+
4	GND

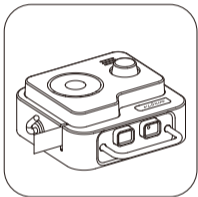
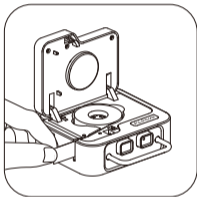
Paper roll installation

- 1** Take out the label paper, scan QR code and tear off the release sticker
- 2** Open the paper compartment cover and put in the paper roll

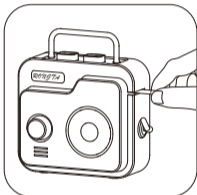
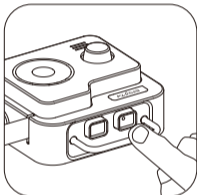


☺ The illustrations and text descriptions used in this guide may be different from the actual ones, and the actual objects shall prevail

- 3** Please pull out the label paper to 5mm length so that it can be printed normally
- 4** Close the lid



- 5 Long press the power key 2s to identify the label position
- 6 The label is out of the paper, and the positioning is completed

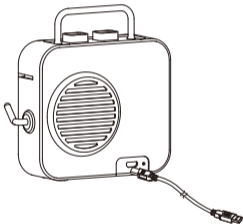


Warning

When installing or replacing the label roll for the first time, label position identification is required (step 5). If there is no tag location identification (step 5), the first to print is missing, not center undesirable phenomenon.

Charging instruction

The printer comes with a lithium battery. When the green light flashes, it reminds you that the power is low, please plug in the USB cable to charge it in time to ensure normal operation.



APP download

Search and download



Open the printer icon at the top of the APP, pair it via Bluetooth, and connect to the powered-on printer.

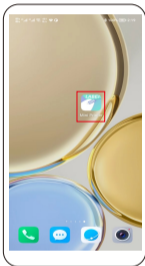
For more operation instructions, please follow the official website through follow the QR code.



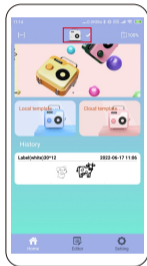
www.rongtatech.com

Printer connection

1 Open the APP



2 Click the printer icon at the top of the screen



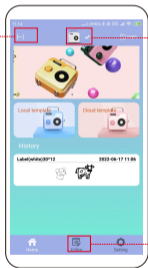
- 3** Enter the interface for selecting a printer, select R1 device to connect



- 4** After the connection is complete, scan the QR code on the label and select "Edit" after binding successfully.

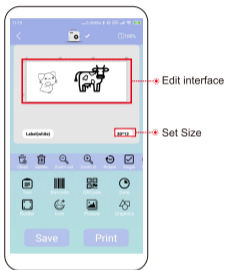
Scan the QR code on label

Connect successfully

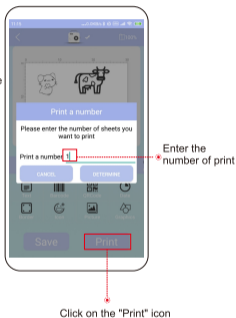


Editor

5 Edit the printing content



6 Click on the "Print" icon



Clean printer head

- 1 Turn off the printer, press the right button then open the front cover
- 2 Use a cotton swab dipped in a small amount of alcohol
clean printer head



Battery Warning

- Do not dismantle, crush or throw into fire.
- Do not continue to use if severe swelling occurs.
- Do not place in a high temperature environment, do not use the battery after immersion in water.
- There is a danger of explosion if the battery is replaced with the wrong type, always dispose of the used battery according to the instructions.

- 3 Wipe the print head gently
- 4 Wait for the alcohol to evaporate for 30 seconds and then turn it on, double-click the power button to print the self-test page



Warning

Do not scratch the print head with hard objects, otherwise the print head will be damaged and the printing effect cannot be guaranteed

Troubleshooting

Can't print, skip paper, not centered, missing, etc

1. Please check that the label paper is correctly placed in the machine?

Please make sure that the label paper is put into the machine with the printing side up. If the label paper is incorrectly placed, it cannot be printed

2. Please check whether to press the power button to allow the machine to calibrate and locate the label paper after turning on the machine?

After startup, when installing or replacing a label roll for the first time, you need to press the power button to remove a blank label to identify the label position.

When printing is unclear

1. Please check whether there is foreign matter or paste in the print head?

Please use a cotton swab dipped in a small amount of alcohol to gently wipe the dirt on the print head. After wiping, do not turn it on immediately and wait for the alcohol to evaporate and dry. Turn on the power and double-click the power button to view the self-test page (do not scrape the printer head with hard objects, otherwise the thermal film will be permanently damaged and cannot be repaired)

2. Please check if the printer has enough power?

The green light is flashing, please connect the machine to the charging cable and use it after charging for at least half an hour.

Printer can't connect

1. Please check that the printer is turned on and the Bluetooth of the mobile phone is enabled.

2. Please check if the device is connected in the APP? This product requires device connection in the APP.

3. Please check whether the mobile phone is authorized?

Due to the requirements of the mobile phone system, Android phone will use your geographical location when connecting, you need to enable GPS and confirm authorization (other mobile phone systems do not need to enable this function).

FCC WARNING

FCC Statement:

This device complies with part 15 of the FCC Rules. Operation is subject to the following two conditions:

- (1) This device may not cause harmful interference, and
- (2) this device must accept any interference received, including interference that may cause undesired operation.

This equipment has been tested and found to comply with the limits for a Class B digital device, pursuant to part 15 of the FCC Rules. These limits are designed to provide reasonable protection against harmful interference in a residential installation. This equipment generates, uses and can radiate radio frequency energy and, if not installed and used in accordance with the instructions, may cause harmful interference to radio communications. However, there is no guarantee that interference will not occur in a particular installation. If this equipment does cause harmful interference to radio or television reception, which can be determined by turning the equipment off and on, the user is encouraged to try to correct the interference by one or more of the following measures:

- Reorient or relocate the receiving antenna.
 - Increase the separation between the equipment and receiver.
 - Connect the equipment into an outlet on a circuit different from that to which the receiver is connected.
 - Consult the dealer or an experienced radio/TV technician for help.
- Caution: Any changes or modifications not expressly approved by the party responsible for compliance could void the user's authority to operate the equipment.

This equipment complies with FCC radiation exposure limits set forth for an uncontrolled environment. This transmitter must not be co-located or operating in conjunction with any other antenna or transmitter.



Rongta Technology (Xiamen) Group Co., Ltd.

ADD: No.88, Tonghui South Road, Tongan, Xiamen, China.

WEB: www.rongtatech.com

TEL: 0086-592-5666129 FAX: 0086-592-5659169

